



# Partner with **ACU**

Enquiries: [industry@acu.edu.au](mailto:industry@acu.edu.au)

# Inspiration and impact

---

ACU students and staff are cultivated, humble and generous people, inspired by the love of others and a desire to create a better common future for humanity.



Nurse **Christine Shanahan** has worked the wards of Sydney's hospitals, but also treated sexual violence victims in Sudan, diagnosed diseases from a tin shed in Timor, opened a pharmacy in post-Soviet Turkmenistan, and nursed her way around a series of Australian outback hospitals.



IT graduate **Jami Emerson** founded charity Chronic Hope, to create an environment of hope and quality healthcare for the chronic illness community. It was her own chronic fatigue diagnosis that set her on an unexpected journey.



ACU school of Education Alumni **Jackson Elliott** won a string of races during his elite career and co-funded running club, Gold Coast Run Co to fight famine in Kenya and built a kitchen at Irigithathi Primary School, on the foothills of Mt Kenya.

# Ways we can make you thrive



## Your workforce

- Professional education courses
- Internships and scholarships
- Work integrated learning



## Your brand

- Joint research centres
- Common good projects
- Equity scholarships



## Your space

- Campus co-location
- Innovation showcase
- Incubator and spin-offs



## Your innovation

- Research projects and consultancy
- Government funding
- Incubator and spin-offs

# Build your workforce with **ACU students**



**Nanoprojects**



**Scholarships,  
internships  
Placements**



**Hackathons**



**Student networks**



## **Your workforce**

- Professional education courses
- Internships and scholarships
- Work integrated learning



## **Your brand**

- Joint research centres
- Common good projects
- Equity scholarships



## **Your space**

- Campus co-location
- Innovation showcase
- Incubator and spin-offs



## **Your innovation**

- Research projects and consultancy
- Government funding
- Incubator and spin-offs






# Health Sciences at ACU

Are you thinking about supervising students on placements? Here are our Health disciplines:

- Occupational therapy,
- Speech pathology,
- Physiotherapy
- Social work
- Nursing, midwifery and paramedicine
- Nutrition and biomedical science
- Psychology
- Public health and administration
- Sport and exercise science




## PRE PLACEMENT

Before you begin your placement, you'll need to complete some documentation to make sure we can find a placement that's right for you.

-  Checklist →
-  Guidebooks →
-  No items to view




## DURING PLACEMENT

Resources to help you get the most out of your experience.

-  No items to view
-  Guidebooks →
-  No items to view

## POST PLACEMENT

We're big on evaluating work integrated learning experiences, and we'd love to know more about how your placement went. Use the forms below to provide feedback.

-  No items to view
-  Guidebooks →
-  No items to view



## Our services include

- Registration through ACU placement portal
- Online support [WILforFHS@acu.edu.au](mailto:WILforFHS@acu.edu.au)
- Direct support from academic discipline team
- Inclusion of your logo to ACU placements partners website <https://www.wil.acu.edu.au>

## And also

- Designing your graduate program
- Bespoke Professional education and CPD [industry@acu.edu.au](mailto:industry@acu.edu.au)






# Education students **at ACU**

Are you thinking about supervising students on placements? Here are our Education disciplines:

- Early childhood
- Primary education
- Secondary education
- Inclusive education
- Disadvantaged schools




## PRE PLACEMENT

Before you begin your placement, you'll need to complete some documentation to make sure we can find a placement that's right for you.

-  [Checklist →](#)
-  [Guidebooks →](#)
-  No items to view




## DURING PLACEMENT

Resources to help you get the most out of your experience.

-  No items to view
-  [Guidebooks →](#)
-  No items to view

## POST PLACEMENT

We're big on evaluating work integrated learning experiences, and we'd love to know more about how your placement went. Use the forms below to provide feedback.

-  No items to view
-  [Guidebooks →](#)
-  No items to view



## Our services include

- Registration through ACU placement portal
- Direct support from academic discipline team
- Inclusion of your logo to ACU placements partners website <https://www.wil.acu.edu.au>

## And also

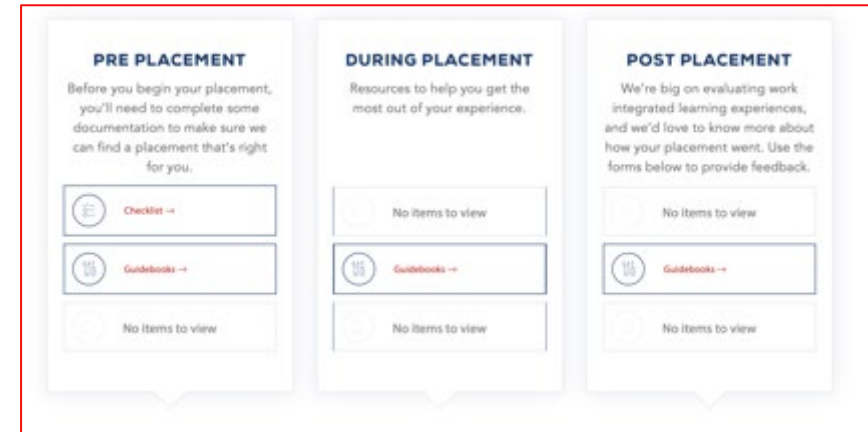
- Designing your graduate program
- Bespoke Professional education and CPD [industry@acu.edu.au](mailto:industry@acu.edu.au)



# Business and IT at ACU

Are you thinking about engaging with students in our Business & IT disciplines?

- Accounting
- Data analytics
- Entrepreneurship
- Event Management
- Finance
- Human resource management
- Informatics
- International business
- Management
- Marketing
- AI/Machine Learning/Deep Learning
- Software development
- Cyber security
- Data analytics
- Data science
- IT Project management



## Our services include

- Online support  
[Business.Placements@acu.edu.au](mailto:Business.Placements@acu.edu.au) and  
[IT.Placements@acu.edu.au](mailto:IT.Placements@acu.edu.au)
- Community engagement placements  
[CE.Placements@acu.edu.au](mailto:CE.Placements@acu.edu.au)
- Inclusion of your logo to ACU placements partners website  
<https://www.acu.edu.au/about-acu/employers-and-industry/wil-partners>

- Direct support from academic discipline team
- Locations: Melbourne, North Sydney, Strathfield, Blacktown and Brisbane

## And also

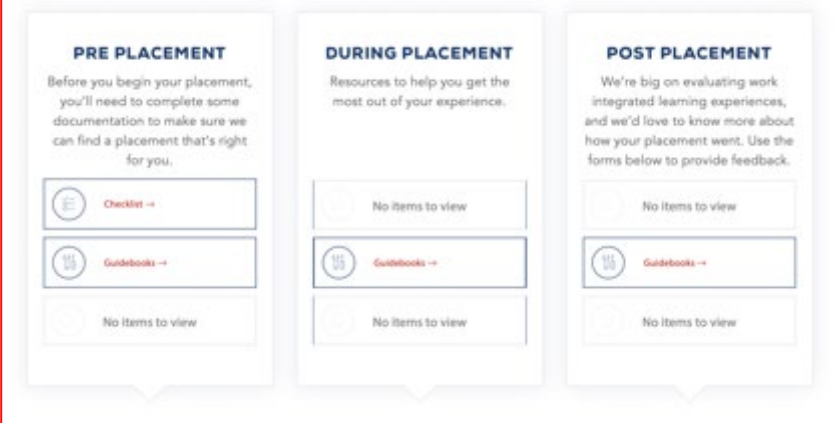
- Designing your graduate program
- Bespoke Professional development  
[industry@acu.edu.au](mailto:industry@acu.edu.au)



# Law and Criminology at ACU

Are you thinking about engaging with students for pro bono placements?

- Third Year students with skills in philosophy, human services, youth work, allied health, Indigenous health, culture, mooting, research, negotiations, critical thinking and communication skills.
- Pro bono program 80 hours of service to the community
- Bachelor of Criminology and Criminal Justice: focus on analysing and understanding issues of crime and delinquency.



PRE PLACEMENT	DURING PLACEMENT	POST PLACEMENT
Before you begin your placement, you'll need to complete some documentation to make sure we can find a placement that's right for you.	Resources to help you get the most out of your experience.	We're big on evaluating work integrated learning experiences, and we'd love to know more about how your placement went. Use the forms below to provide feedback.
<a href="#">Checklist</a>	No items to view	No items to view
<a href="#">Guides</a>	<a href="#">Guides</a>	<a href="#">Guides</a>
No items to view	No items to view	No items to view



## Our services include

- Online support [Law.Placements@acu.edu.au](mailto:Law.Placements@acu.edu.au)
  - Direct support from academic discipline team
  - Sponsor an event or competition
  - Inclusion of your logo to ACU placements partners website
- <https://www.acu.edu.au/about-acu/employers-and-industry/wil-partners>

## Delivery

- Key dates <https://www.acu.edu.au/study-at-acu/important-dates>
- Campus Locations: Blacktown, Brisbane, Melbourne and North Sydney
- No cost to partner organisations

Contact [industry@acu.edu.au](mailto:industry@acu.edu.au)





# PhD Students **at ACU**



## PhD Internship

Access the talent you need by hosting an ACU PhD intern. An internship is a tightly focused, three-month research and development project undertaken in collaboration with an ACU PhD student.

PhD students are supervised by academics who are world-leading researchers in areas of ACU's research strength, especially in:

- **Health** (psychology, exercise science, clinical sciences, allied health, nursing, and public health).
- **Education** (educational leadership, Indigenous education, specialist studies in education, and teacher education).
- **Arts, social sciences and creative arts** (history, sociology, and political science).
- **Philosophy** (all areas).
- **Theology** (systematic theology, biblical and early Christian studies, medieval and early modern studies, studies of religion, and Vatican II studies).



### Benefits include

- Kick start innovation at your organisation. Attain outcomes on a research and development initiative in three months.
- Create a pipeline for high-level talent
- Retain ownership of all intellectual property
- An opportunity for your staff to gain mentoring and supervision experience
- Get access to high level expertise through ACU supervision
- Access to highly skilled and independent thinkers
- Minimal administration, we handle HR costs

### For more information

- Visit our [PhD Internships website](#), or
- Contact us at [HDR.Projects@acu.edu.au](mailto:HDR.Projects@acu.edu.au)



# PhD Students **at ACU**



## PhD Scholarship

By engaging with individuals, organisations, and the communities who ultimately benefit from our expertise, our research improves health, wellbeing, and prosperity in a sustainable way. Scholarships are used to support Doctor of Philosophy (PhD) students to undertake a research project and develop as a researcher.

We can partner with organisations from business, government, not-for-profits, and community groups.

### Types of Scholarships:

- Stipend scholarship: A fortnightly payment made to the candidate to support their day-to-day costs of living, while undertaking a PhD program.
- Research or project costs scholarship: A payment to support project costs for the candidate's research program. Examples include, materials or equipment costs, conference or research data collection travel, or publication costs. These scholarships are generally offered as a one-off contribution.



### Benefits include

- Accessing a highly trained research student who can contribute new ideas and fresh perspectives to your business's research and development
- Create a pipeline for high-level talent
- Gaining possible eligibility for the Australian Government Research and Development tax incentive
- Helping to shape future leaders of industry and research
- An opportunity for your staff to gain mentoring and supervision experience
- Developing stronger connections with ACU

### For more information

- Visit our [Industry Scholarships for PhD Students website](#), or
- Contact us at [HDR.Projects@acu.edu.au](mailto:HDR.Projects@acu.edu.au)

## Learning put into practice

- Is your organisation ready to build links with the next generation of Business, Commerce and IT experts?
- Do you have staff looking for mentorship opportunities?
- Do you have creative project ideas waiting for action?

At ACU we have creative students keen to gain practice on real-life projects and connect with potential future employers

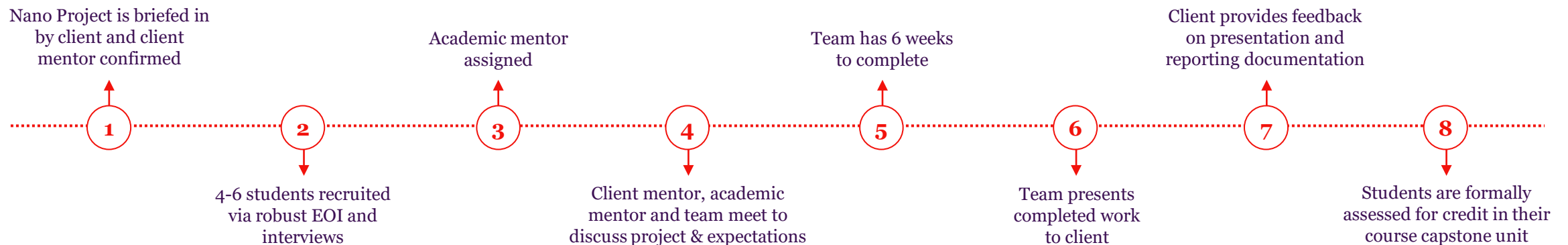


## Our services include

- Coordination of multi-student projects based on a problem of your choice
- Involvement of final year students in accounting, human resource management, business data analytics, marketing and management.
- Opportunity to connect and know students and identify future recruits
- Contact: [Industry@acu.edu.au](mailto:Industry@acu.edu.au)



## PROCESS TIMELINE – SEMESTER 1 (MARCH – JUNE) OR SEMESTER 2 (AUGUST – OCTOBER)



# ACU **First Peoples**

ACU is committed to reconciliation and works in new ways to find opportunities and pathways for Aboriginal and Torres Strait Islander peoples in undergraduate and postgraduate education and employment.

**Different ways your organisation can partner with ACU to support Aboriginal and Torres Strait Islander students are:**

- **offering scholarships and work integrated learning/placements;**
- **offering employment and mentoring opportunities; and**
- **building cultural capability of your organization and working towards reconciliation.**

Workplace culture and values has a major impact when attracting and retaining talent. ACU can assist your organisation developing a more inclusive and diverse work environment, reflecting ACU's core values of the common good, equity and justice.

ACU offers our staff cultural awareness training and culturally safe teaching practice training needed to ensure a safe and inclusive work environment for our First Nations staff and students. Our Micro credential; Culturally Safe Teaching Practice is in progress for delivery to a wider industry audience.

Contact our [First Peoples Directorate](#) or [Industry@acu.edu.au](mailto:Industry@acu.edu.au)



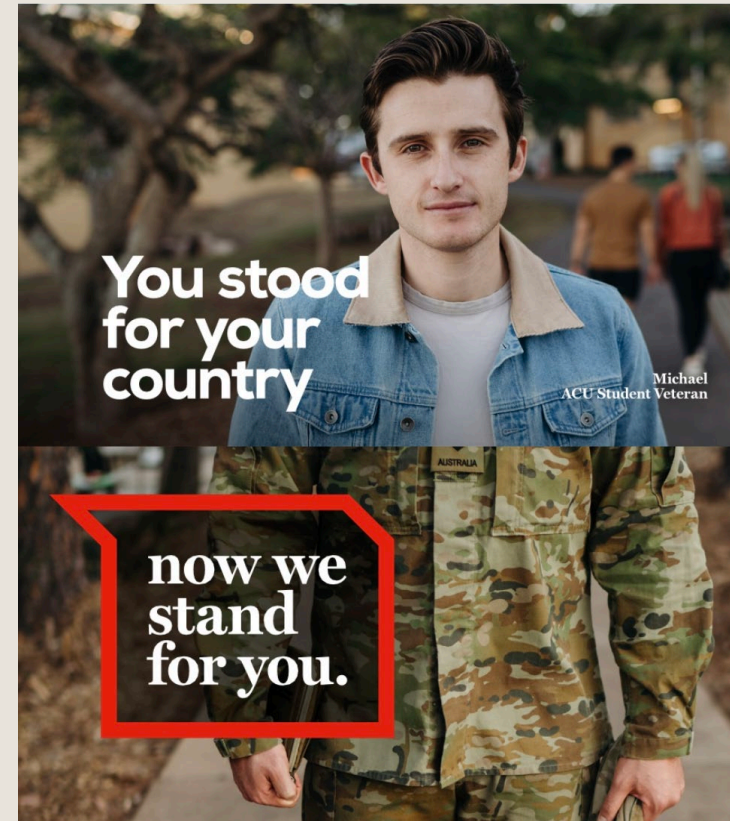
# Student veterans at ACU

- Mature age students with years of experience in Service
- Student Veterans are highly motivated, innovative, and driven individuals.
- Excel in structured environment
- Some have obtained a **security clearance** in Service
- They are skilled at working in teams and have exemplary communication skills.
- Student Veterans value real world/lived experience, such as placement and/or industry mentors
- They make great mentors to their younger study peers
- Relate very well to workforce and focus on their contribution to the team / workplace
- Often opt for study in the field of their Service experience, but open to opportunities



## Our services include

- Veteran Entry Program
- Recognition of Prior Learning for members of the ADF
- Opportunities for future employers to engage with ACU veteran students



**130**  
ENROLLED STUDENT  
VETERANS



**79%**  
ARE IN THE FACULTY  
OF HEALTH SCIENCE



**60%**  
OF THESE ARE STUDYING  
PARAMEDICINE, NURSING,  
OR MIDWIFERY



# Industry placement projects

- Do you want to link to your future workforce – onsite or virtually?
- Do you have project ideas waiting for action, such as program and service evaluation or quality improvement?

At ACU we have multiple students keen to gain practice on real-life projects and connect with potential future employers

- Create/Co-design your Project with ACU
- Collaborate with a team of Bachelor and Masters students
- Work on a medium or long term placement project
- Project runs over 1-4 teaching periods (6 months – 2 years)
- Valuable outputs are gained according to your needs
- Mentorship opportunities available for your staff

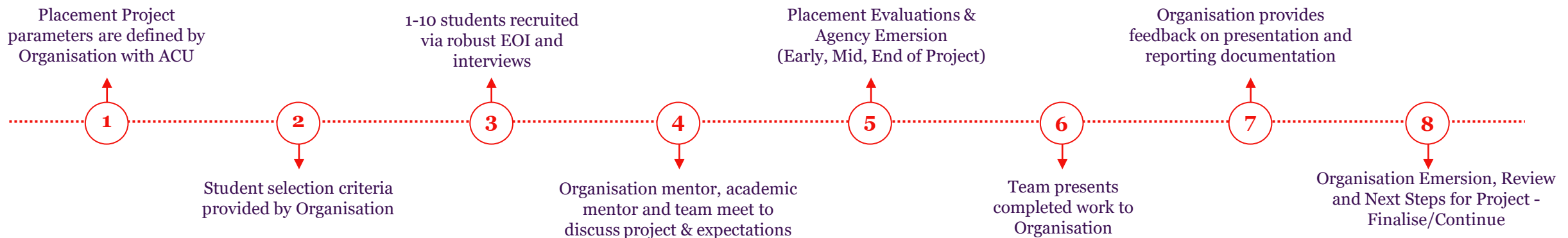


### Our services include

- Coordination of Placement of student
- Consistent supervision of project and student(s)
- Co-design with ACU Academics if desired
- Opportunity to connect with students and identify future recruits
- Professional Development for your staff
- **To find our more** contact Sera Harris; [sera.harris@acu.edu.au](mailto:sera.harris@acu.edu.au)



### PROCESS TIMELINE for 16 week Project (500 hrs) – SEMESTER 1 (FEBRUARY– JULY) OR SEMESTER 2 (AUGUST – NOVEMBER)



# Theological formation

Providing theological formation in flexible and creative ways, approaching theology as a collaborative enterprise, co-constructed in partnership with others at work in the world.

Offers theological formation opportunities for Catholic leadership and governance in the sectors of health, aged care, social services, and church life.

Professional learning and consulting opportunities directly support executive teams, boards, pastoral leaders, welfare professionals, leaders of diocesan agencies, and all who contribute to Catholic organisational culture.

We partner with individuals and organisations to support reflection upon specific areas of need or opportunity, and deliver accessible, and relevant formational and educational opportunities that are tailored to address local and national requirements.

XAVIER CENTRE FOR THEOLOGICAL FORMATION: [www.acu.edu.au/xaviercentre](http://www.acu.edu.au/xaviercentre)

[Learn more about some of our co-constructing theology projects and initiatives](#)



## Our services include

- Working with your organisation to develop the theological capacity of your staff
- Executive and board formation for effective mission-led governance
- Flexible educational and development opportunities anchored by the concepts of leadership in Catholic identity and mission, formation, and health and social ethics
- Curriculum design and development for Catholic education across dioceses
- Stakeholder driven research projects and collaborations around identity and mission
- Learning opportunities, including:
  - short courses
  - certificate and bachelor opportunities
  - award postgraduate coursework programs
  - professional doctorates and research degrees
  - international study tours
  - tailored professional learning and in-service opportunities.

# Many other ways to **connect with ACU** students

- Advertise a job on [ACU Career hub](#)
- Offer a scholarship
- Run a Hackathon or a competition
- On-campus presentations
- Networking events
- Your creative idea

Have a chat with us [industry@acu.edu.au](mailto:industry@acu.edu.au)





# Join ACU on campus



Run events



Create a joint  
innovation lab



Lease space to  
promote your brand



Run innovation  
showcases



## Your workforce

- Professional education courses
- Internships and scholarships
- Work integrated learning



## Your brand

- Joint research centres
- Common good projects
- Equity scholarships



## Your space

- Campus co-location
- Innovation showcase
- Incubator and spin-offs



## Your innovation

- Research projects and consultancy
- Government funding
- Incubator and spin-offs



# Our campuses

- Ballarat
- Blacktown
- Brisbane
- Canberra
- Melbourne
- North Sydney
- Strathfield
- Rome



Ballarat



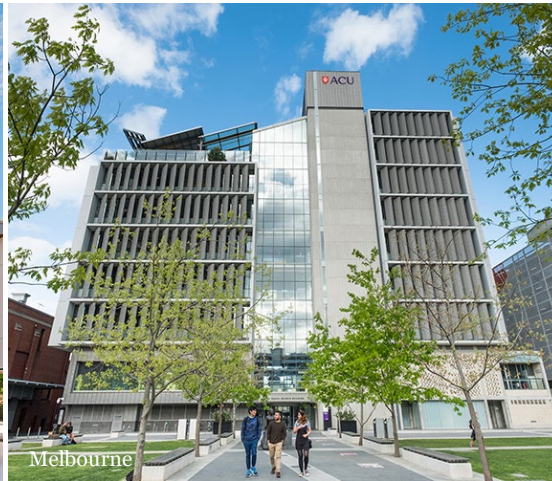
Blacktown



Brisbane



Canberra



Melbourne



North Sydney



Strathfield



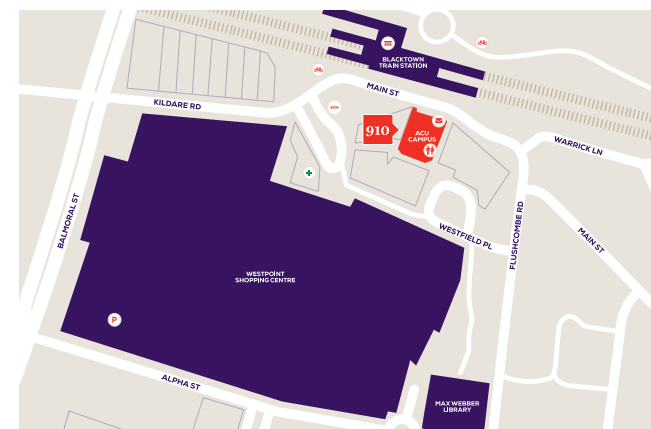
Adelaide Leadership Centre



Rome

# New Blacktown Campus

The Blacktown Campus offers a range of undergraduate, postgraduate and pathway courses across our faculties of Education and Arts, Health Sciences, Law and Business, and Theology and Philosophy.





# Upcoming Mother Teresa building

**MELBOURNE**

Napier Street and Victoria Parade

See [campus development plan](#)

# Sports performance facilities

- Performance, recovery and injury in the sporting domain, using applied research techniques
- Sport performance technology
- Interactions between athlete performance, fatigue, sleep and recovery
- Prevention, risk identification
- Rehabilitation of injury



## Our services include

- Space hire/rental
- Onsite support
- Engagement with sport science expert
- IT equipment support
- Event management support





Brisbane



Blacktown



Melbourne



North Sydney

# ACU Moot courts

- Brisbane, Blacktown, North Sydney, Melbourne
- Court training
- Filming, media creation
- Simulations, pre-court practice or
- Formal meetings
- Break out space



## Our services include

- Room hire
- Onsite support
- Catering options
- IT equipment support

# McAuley at Banyo Brisbane

## Playing Fields / Ovals

Soccer Union Volleyball

## Event Spaces

Gaudete Event Centre

Oasis garden

Brisbane Leadership Centre (CBD)

## Health Clinics

GP & General Health Speech

Pathology Exercise Science

Physiotherapy

## Chapel & Ministry

Catholic Chapel Student ministry

## New Sports Precinct

Proposed new Olympic pool Indoor  
and outdoor sports facilities

Community services (gym etc)

10,000 steps

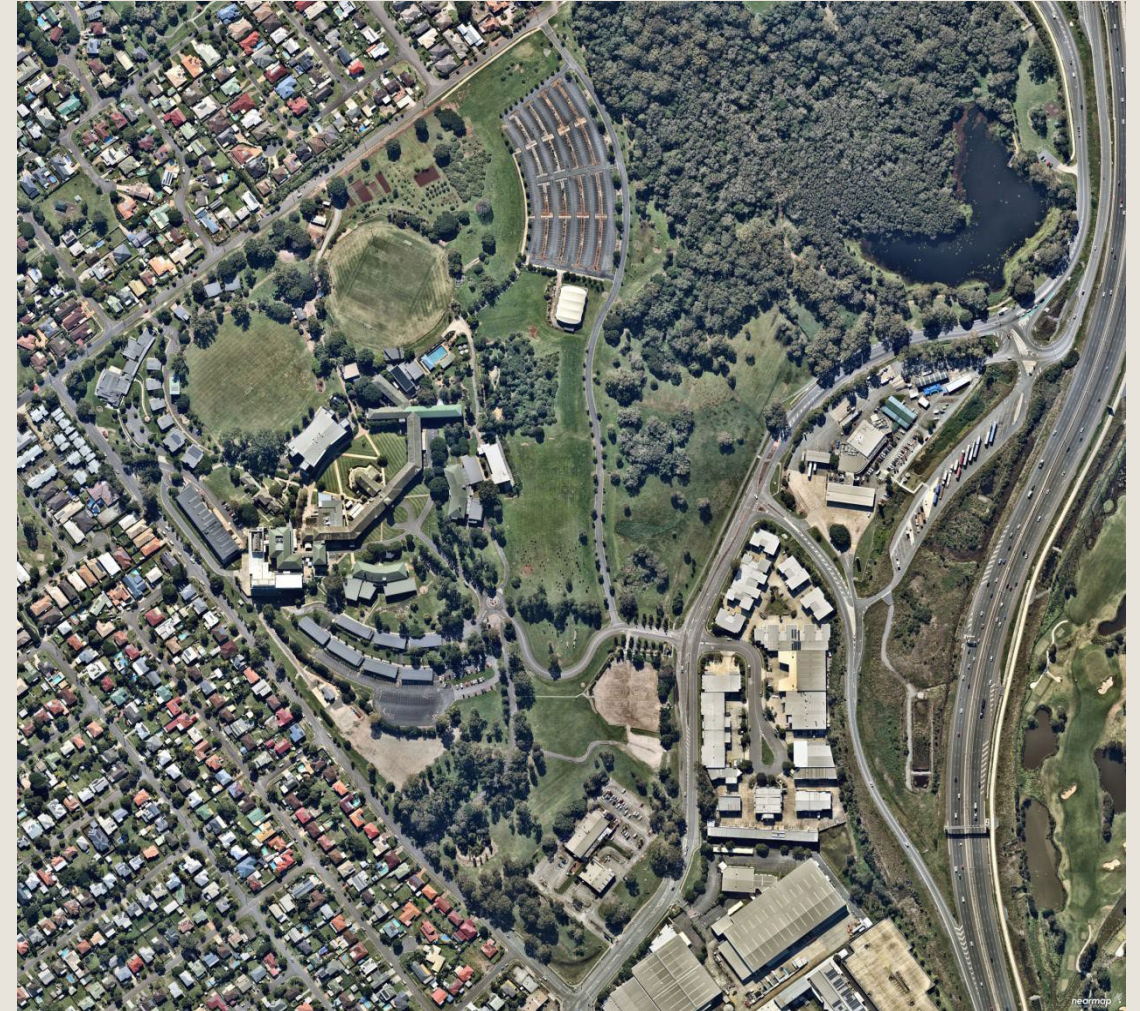
## Gardens & Grounds

Indigenous Garden Sensory Garden

Bora Rings / Water Hole

Heritage Trees Land 4 Wildlife

## Veteran Student Unit



Over 11,000 students study on our 40 Hectare campus, just 3km from Brisbane Airport and 12km from the CBD

# Brisbane Sports Precinct vision

A staged development allows for considered growth –  
Stage One is to be developed to enable:

- Equitable access
- Community engagement & presence
- Entry plaza and welcome
- Connection to campus and campus services
- Elevated Gym
- Wellbeing
- Oval viewing platform

- Value: \$10m

Stage Two Plan allows for:

- Olympic pool
- Sports Courts (Basketball etc)
- Gym expansion
- Wellbeing expansion
- Second external court

- Value: \$12.5m



ACU's vision for a **new Sport Precinct** will align with the Brisbane 2032 Summer Olympic Games



# Innovate with ACU



**Tap into ACU's expertise  
through consulting**



**Create a joint  
innovation lab**



**Apply for grants with  
research leaders**



**Run seminars and  
innovation think tanks**



## Your workforce

- Professional education courses
- Internships and scholarships
- Work integrated learning



## Your brand

- Joint research centres
- Common good projects
- Equity scholarships



## Your space

- Campus co-location
- Innovation showcase
- Incubator and spin-offs



## Your innovation

- Research projects and consultancy
- Government funding
- Incubator and spin-offs

# Innovation in education

## Teacher performance assessment

### Expertise

- Competence assessment for pre-service teachers that connects the academic program and the placement programs in schools
- Evaluates skills of preservice teachers in planning, teaching, and assessing during final year placement
- Enable pre-service teachers to demonstrate their competence
- Trailed nation-wide
- Endorsed by AITSL (Australian Professional Standards for Teachers, AITSL)



### Our services include

- Workforce readiness analysis
- Design of dashboards for employee performance
- Solutions in longitudinal tracking of performance
- Access to talent in education
- Consulting on best-practice assessment methodologies
- Consulting on multimodal and digital literacy
- Consulting on best-practice STEM education
- Design/ Consulting for Cybersafety for children



### Adopted by 19 major education institutions



Rugby League  
Soccer  
AFL  
Netball  
Rowing  
Swimming  
Gymnastics  
Cycling



# Sports Performance, Recovery, Injury and New Technologies (SPRINT) **Consultancy**

SPRINT Consultancy supports businesses involved in high performance sports and elite performance environments.



## **Our services include**

- Athlete tracking
- Human performance testing
- Hamstring injury risk assessments
- New technology validation and reliability assessment
- Staff and player education
- Performance program review



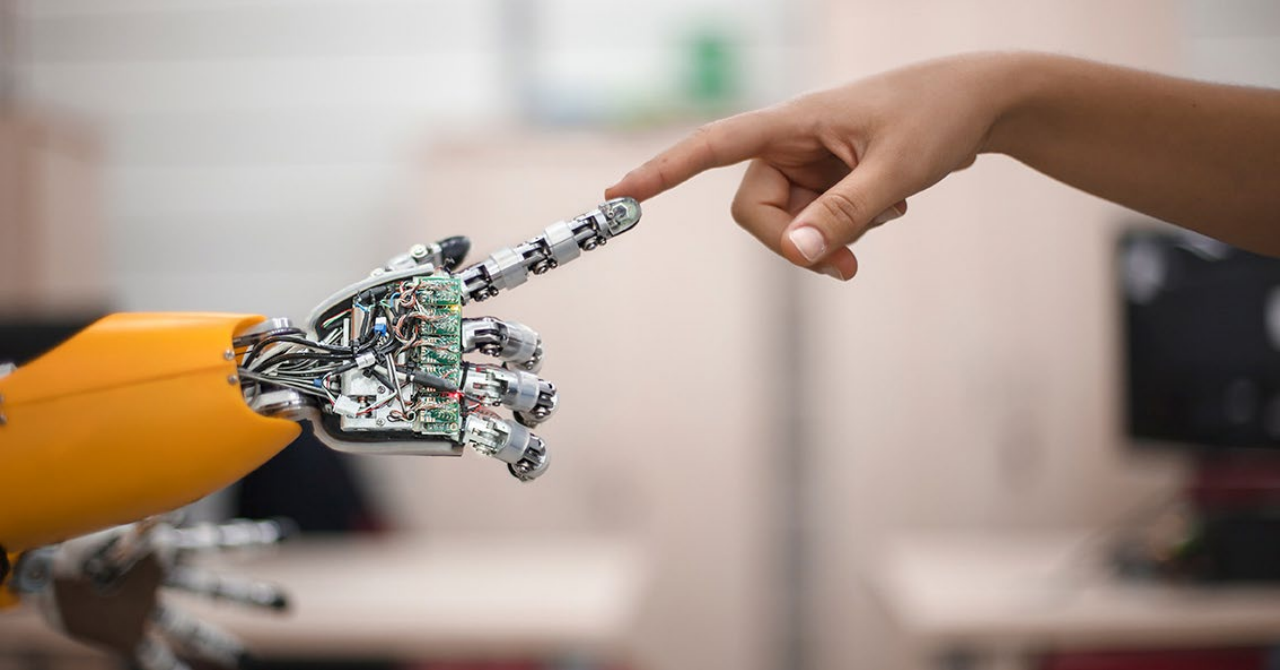
# Ethics consultancy

ACU can provide highly professional ethics analysis, advice and recommendations, tailored to organisational and industry needs.



## Our services include

- Ethics Review / Audit
- Ethical Investing
- Wellbeing in the Workplace
- Diversity, Difference and Inclusion
- Governance, Strategy and Risk
- Organisational Culture
- Recovering Trust
- Crisis Management



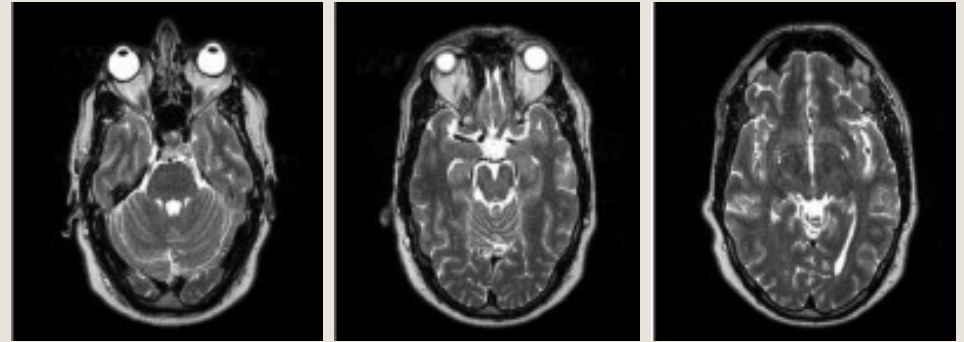
Research disciplines

# Artificial intelligence

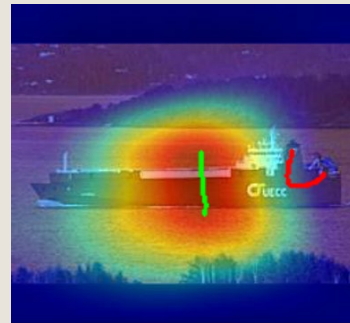


## Our services include

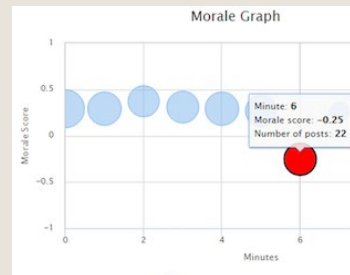
- Mathematical modelling
- Machine learning, Deep learning and Computer vision Algorithms
- Workflow design
- Prototyping and testing
- Performance metrics design
- Dataset quality evaluation



Computer-aided diagnosis



Decision making performance in high risk, time critical environments (submarine control room console operators).



Real-time analysis of emotions and sentiments from audiences' feedback.

Research disciplines

# Positive psychology and education **innovation**



## Our services include

- Children's activity and health in schools
- Effects of exposure to electronic screens on development
- Aboriginal and Torres Strait Islander peoples' education
- Educational inequality
- Secondary school student engagement
- Re-engagement of 11 to 14-year-old students, at risk of dropping out

Research disciplines

# Nursing innovation



## Our services include

- Implementation science
- Clinician practice change
- Preventing health-care infection
- Medication safety
- Acute stroke care
- Triage, treatment and transfer of patients
- Wound care

## Sport, Exercise & Nutrition

### Our capabilities include

- Physical capacity profiling
- Training and competition load and fatigue monitoring
- Sleep and recovery
- Collaborations & consultancy with elite sports and industry
- Biomechanics and neurophysiology for prevention and management of sports/exercise-related injury
- Periodisation of nutrition intake for health, training adaptation and muscle recovery
- Gut microbiota & nutrition
- Fracture prediction

## Behavioural Sciences & Psychology

### Our capabilities include

- Environmental & psychosocial determinants of lifestyle behaviours
- Cognitive and cardiometabolic health
- Sustainable environments
- Educational psychology
- Self-determination theory
- Motivation and resilience
- Veteran mental health

## Humanities & Social Sciences

### Our capabilities include

- Refugees, migration and humanitarian studies
- Gender, military & politics
- Australian and Pacific Island Relations
- Populism and localism studies



Research disciplines

# Brain and mind research



## Our services include

- Digital innovation for the wellbeing of mental health patients
- Brain mechanisms of addiction, substance use behaviours
- Development and disability over the lifespan

# Professional development & teaching innovation to change behaviour

At ACU we deliver engaging, effective, professional development programs, leveraging digital innovation. We can also deliver bespoke and large-scale training programs based on your organization's needs.

We work with world class researchers to inform and change outdated industry practises. Using digital innovation to translate research into a format which delivers the latest research outcomes to industry and provides training on a large-scale to upskill your workforce.

Please view our **Video**:



## Our services include

- We make engaging videos and effective Professional Development programs based on the latest research
- We can deliver bespoke and large scale training programs based on your organisational needs leveraging digital innovation
- We specialise in changing behaviour at scale, like nurses in hospitals and teachers in schools
- We can help meet your staffs' CPDs.

# Innovate with ACU: Co-constructing theology projects and initiatives

Through our Xavier Centre, we provide theological formation in flexible and creative ways, approaching theology as a collaborative enterprise, co-constructed in partnership with others at work in the world.

Framed by an engagement with scripture, theology, spirituality, supervision and leadership, the Xavier Centre provides a context for individuals, communities and organisations to reflect on faith and service.

Our programs are:

- designed to equip you and/or your organisation with the knowledge and skills required to respond to the demands of an evolving, global, diverse, and digital world
- shaped by a learning design that is flexible, and responsive to emerging questions and contextual need.



## **Our services include**

- consultancies for mission and identity strategy in Catholic health care and education
- executive, board, and trustee formation programs for Catholic organisations in health and education
- curriculum design and development for Catholic education across dioceses
- stakeholder driven research projects and collaborations around identity and mission.

# Build your workforce with students who have a different perspective

Is your organisation developing training and formation programs for a mission-engaged workforce?

Want to mentor students in this space?

Does your organisation think about the intersection of mission and organisational culture?

Are you looking to supervise students in assessing current formation and training programs for mission effectiveness?



## **Our services include**

### **Expertise in:**

- Leadership for mission
- Engaging Scripture for contemporary times
- Thinking theologically
- Ethics and bioethics

## About ACU



# Impact through empathy

Our drivers are the pursuit of knowledge, the dignity of the human person and common good.

**31,000+**  
STUDENTS



**119,000+**  
ALUMNI

**9**  
CAMPUSES



**2,288**  
TOTAL STAFF



**1,109**  
ACADEMICS

**11%**  
INTERNATIONAL  
ENROLMENTS

**75%**  
FEMALE  
ENROLMENTS

**Top 2%**  
UNIVERSITIES WORLDWIDE



*Times Higher Education World University Rankings 2021\**

**Top 80**  
UNIVERSITIES IN ASIA-PACIFIC



*Times Higher Education Asia-Pacific University Rankings 2020*

**Top 25**  
GENERATION Y UNIVERSITIES



*Times Higher Education Young University Rankings 2020\*\**

**No. 1**  
GRADUATE EMPLOYMENT



*Graduate Outcomes Survey – Longitudinal 2020, full-time employment*

\*Percentage calculated as ACU's world rank as a proportion of the total number of universities in the world: *International Handbook of Universities 2019*, Palgrave MacMillan

\*\* "Generation Y universities" are universities established between 1986 and 1999