



See the latest construction progress on [webcam 1](#) and [webcam 2](#).

Upcoming and ongoing activity: How you may be affected

Area	Impact	Timing
Mary Glowrey Building (MGB) services upgrade	MGB services upgrade works continue. Further detail will be provided through university works notifications.	Ongoing
MGB Fish Stair	MGB fish stair extension works are in progress preparing for the connection into the new STKB structure.	Ongoing
MGB Façade	Heritage conservation works to the MGB façade continue including external paint and rendering works, window replacement and make good works inside the MGB. Please observe and follow all construction signage.	Ongoing
MGB Overbuild	MGB overbuild works continue through levels 6, 7 and 8 including services rough-in and preparation for the sports court.	Ongoing
Main Construction Site	The installation of the façade panels continue. Panels can be seen on the façade whilst standing on Napier Street and Victoria Parade.	Ongoing
Main Construction Site	The erection of STKB structural steel continues with steel currently being installed to level 12.	Ongoing
Main Construction Site	The fit-out in the STKB basement continues including services rough-in, linemarking and finishes works.	Ongoing
Main Construction Site	Pedestrians should be aware of increased construction vehicle movement. Please expect changes to traffic and pedestrian routes with the assistance of traffic controllers.	Ongoing



Please observe direction and safety signs and follow the instructions of Watpac traffic controllers.

If you wish to provide feedback, contact the team at ACUfeedback@watpac.com.au

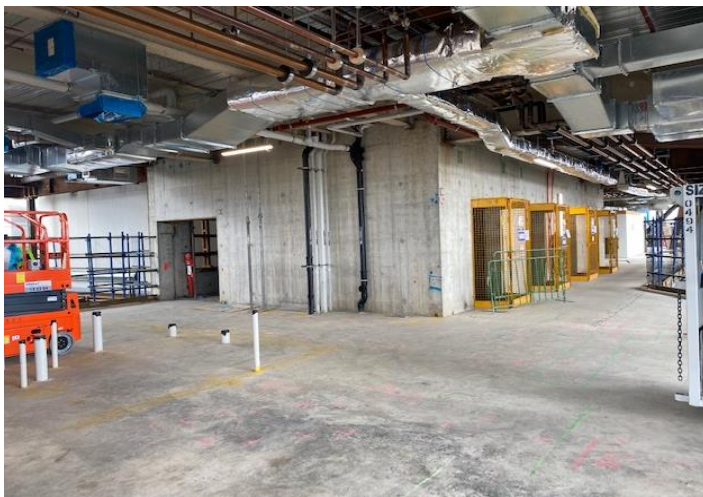
The Latest In Pictures



View From Camera 1



View From Camera 2



STKB Lift Core



STKB Basement Carpark Line Marking



Please observe direction and safety signs and follow the instructions of Watpac traffic controllers.

If you wish to provide feedback, contact the team at ACUfeedback@watpac.com.au