



See the latest construction progress on [webcam 1](#) and [webcam 2](#).

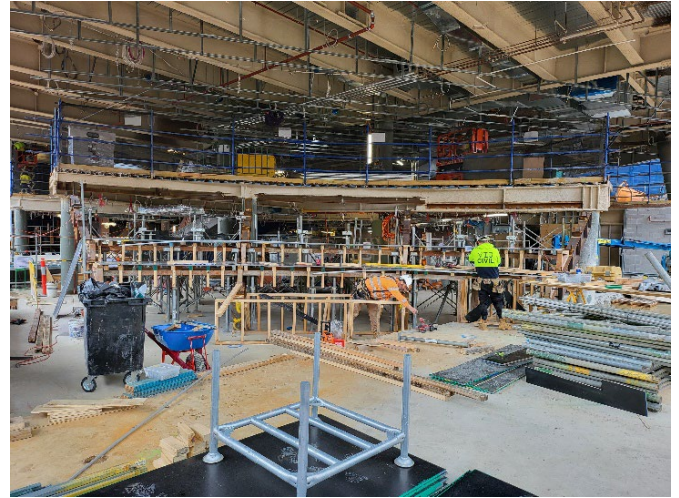
Upcoming and ongoing activity: How you may be affected

Area	Impact	Timing
Main Construction Site (STKB)	Last of the façade panels will be installed in October.	October
Mary Glowrey Building (MGB) services upgrade	MGB services upgrade works continue.	October
MGB Interconnections	Doorways between the STKB and MGB will be installed, and hoarding protection will be removed once it is safe to do so.	October
MGB Façade	Heritage conservation works to the MGB façade continue including render, paint and window trims. Scaffold will continue to come down as these works are completed along Victoria parade and Napier street..	October
MGB Access	Little Victoria street fire escape stair frame is now installed, and balustrade installation has begun. Southern entry from Victoria Pde will be closed off.	October
Main Construction Site (STKB)	The remaining tower crane will be removed in early October	October
Main Construction Site (STKB)	The fit-out in the STKB continues with joinery, internal windows, tiling and painting well progressed.	Ongoing
Main Construction Site	Pedestrians should be aware of increased construction vehicle movement. Please expect changes to traffic and pedestrian routes with the assistance of traffic controllers, particularly for Victoria Pde scaffold removal and Little Victoria Parade fire escape stair installation.	Ongoing

The latest in pictures



Level 5 Conservatory



Ground Floor Auditorium



Views from Victoria Pde



Level 3 Seating



Please observe direction and safety signs and follow the instructions of Watpac traffic controllers.

If you wish to provide feedback, contact the team at ACUfeedback@watpac.com.au