



See the latest construction progress on [webcam 1](#) and [webcam 2](#).

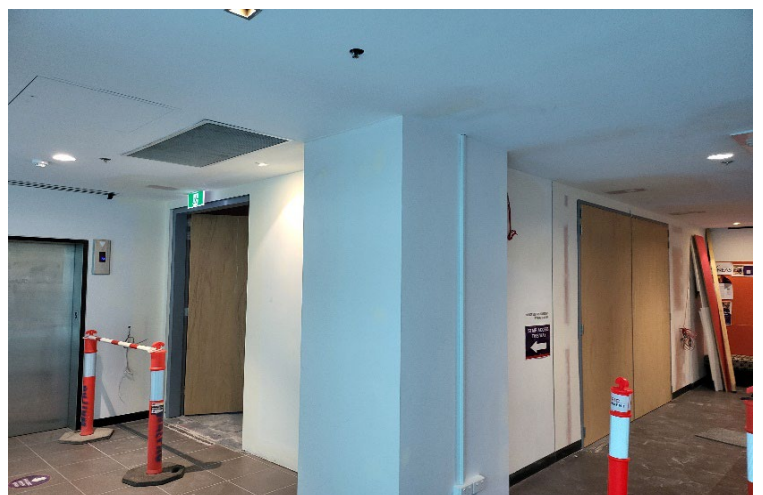
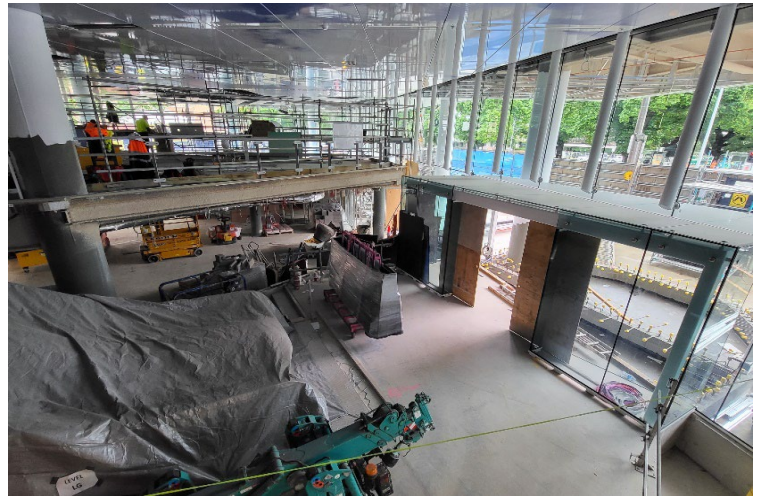
Upcoming and ongoing activity: How you may be affected

Area	Impact	Timing
Main Construction Site Internal (STKB)	Level 2 defect inspection has occurred. Two thirds of the building is on permanent power. Floor finishes, cabinetry, tiling and painting continue with loose furniture being installed. Builders clean has commenced.	November/ December
Mary Glowrey Building (MGB) services upgrade	MGB services upgrade works continue, with further detail to be advised through the university works notifications.	November/ December
Mary Glowrey Building (MGB) Interconnections	Doors between the STKB and MGB will be painted and electronically integrated. Internal sandwich panels have been removed and are in the process of being made good. Final sandwich panels to perimeter of building will be removed.	November/ December
Mary Glowrey Building (MGB) Façade	Scaffold has been removed allowing balance of Heritage conservation works (scraping/repainting/trims) to be completed on the lower levels.	November/ December
Mary Glowrey Building (MGB) Access	Little Victoria St fire escape stair balustrade installation approaches completion. Paving works to external of north entry will be completed. North Entry access will be reopened.	November/ December
Main Construction Site External (STKB)	The temporary entry on Victoria Parade has been removed and all entry is now via the corner of Young and Little Victoria Streets. Water tank and final drainage connection will be installed.	December
External Perimeter of MGB & MTB	Footpath and street repair works have begun and include paving, asphalt, kerb and channels.	December
Main Construction Site	Pedestrians should be aware of increased construction vehicle movement. Please expect changes to traffic and pedestrian routes with the assistance of traffic controllers and follow signs and directions.	Ongoing

Saint Teresa of Kolkata Building update

30 November 2022

The latest in pictures



Please observe direction and safety signs and follow the instructions of Watpac traffic controllers.

If you wish to provide feedback, contact the team at ACUfeedback@watpac.com.au