



See the latest construction progress on [webcam 1](#) and [webcam 2](#).

Upcoming and ongoing activity: How you may be affected

Area	Impact	Timing
Main Construction Site	Installation of the St Teresa of Kolkata Building façade panels has begun and façade panels can now be seen whilst standing on Victoria Parade and Napier Street.	Ongoing
Mary Glowrey Building (MGB) services upgrade	The MGB's new Air Handling Units (AHU's) have been installed and are now operational - the integration works will continue into February.	Ongoing
MGB Atrium	MGB atrium upgrade works continue, including services connection works, scaffold, new glazing installation, painting and hoarding removal. Alternate access routes will be in place.	Ongoing
MGB Fish Stair	MGB fish stair extension works are in progress preparing for the connection into the new STKB structure.	Ongoing
MGB Façade	Heritage conservation works to the MGB façade continue, including painting and rendering works to the external of the MGB, window replacement and make good works inside the MGB.	Ongoing
MGB Overbuild	MGB overbuild works continue on levels 6, 7 and 8 including services rough-in.	Ongoing
MGB	Library Silent Study room window infill works are underway. During this time these rooms will be inaccessible.	Ongoing
Main Construction Site	The erection of STKB structural steel continues with steel currently being installed to levels 8-9.	Ongoing
Main Construction Site	The fit-out in the STKB basement continues including services rough-in and blockwork construction.	Ongoing
Main Construction Site	Pedestrians should be aware of increased construction vehicle movement. Please expect changes to traffic and pedestrian routes with the assistance of traffic controllers.	Ongoing



Please observe direction and safety signs and follow the instructions of Watpac traffic controllers.

If you wish to provide feedback, contact the team at ACUfeedback@watpac.com.au

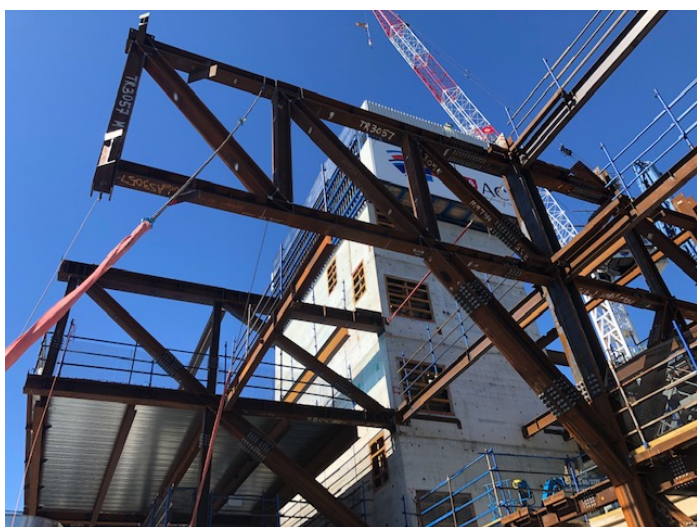
The latest in pictures



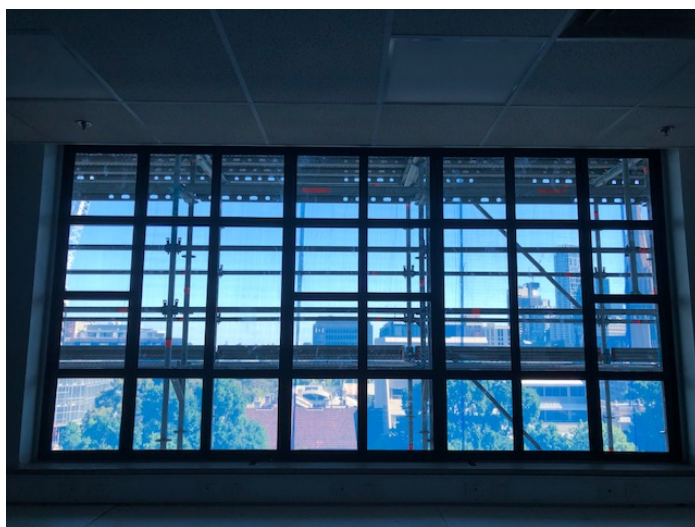
View from Camera 1



View from Camera 2



MGB Overbuild Works



MGB Heritage Window Replacement



Please observe direction and safety signs and follow the instructions of Watpac traffic controllers.

If you wish to provide feedback, contact the team at ACUfeedback@watpac.com.au