



See the latest construction progress on [webcam 1](#) and [webcam 2](#).

Upcoming and ongoing activity: How you may be affected

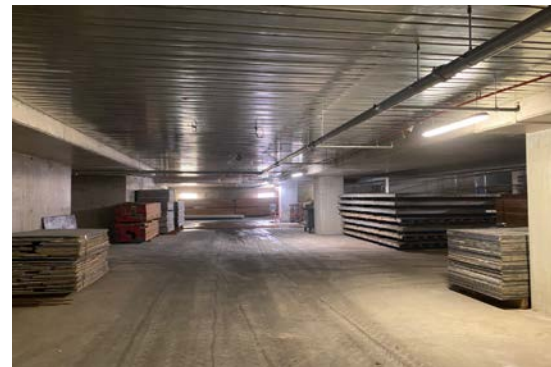
Area	Impact	Timing
CitiPower network	CitiPower network works have commenced in the area, expect disruptions and changes to traffic arrangements during these works. You can visit this web page for more information. CitiPower works are independent to the project.	May – August
Mary Glowrey Building (MGB) services upgrade	MGB services upgrade works continue. Further detail will be provided through university works notifications.	Ongoing
Mary Glowrey Building Atrium	MGB Atrium upgrade works continue to facilitate new services works involving new hoarding, structural steel grillage, scaffold, demolition and new glazing installation. Alternate access routes will be in place.	Ongoing
Mary Glowrey Building Fish Stair	MGB Fish Stair extension works are in progress preparing for the connection into the new MTB structure.	Ongoing
Mary Glowrey Building	Heritage conservation works to the MGB façade will impact traffic arrangements.	Ongoing
Mary Glowrey Building Overbuild	MGB Overbuild works continue including services rough-in.	Ongoing
Main Construction Site	The erection of STKB structural steel has commenced, with steel currently being installed on level 1 and 2.	Ongoing
Main Construction Site	The fit-out has commenced in the STKB basement, including services rough-in, blockwork and construction of the substation on level B1.	Ongoing
Main Construction Site	Pedestrians should be aware of increased construction vehicle movement. Please expect changes to traffic and pedestrian routes with the assistance of traffic controllers.	Ongoing

Please expect intermittent noise during this period

Saint Teresa of Kolkata Building update

30 July 2021

The latest in pictures from a new vantage point



Please observe direction and safety signs and follow the instructions of Watpac traffic controllers.

If you wish to provide feedback, contact the team at ACUfeedback@watpac.com.au