



See the latest construction progress on [webcam 1](#) and [webcam 2](#).

Upcoming and ongoing activity: How you may be affected

Area	Impact	Timing
All	The Victorian Government shutdown the construction industry on Tuesday 21 September. Anticipated reopening scheduled for Tuesday 5 October pending Government orders.	21 Sep – 5 Oct
CitiPower network	CitiPower network works continue in the area so expect disruptions and changes to traffic arrangements. You can visit this web page for more information. CitiPower works are independent to the project.	Ongoing
Mary Glowrey Building (MGB) services upgrade	MGB services upgrade works continue. Further detail will be provided through university works notifications.	Ongoing
Mary Glowrey Building (MGB) Atrium	MGB atrium upgrade works continue to facilitate new services works involving services connection works, structural steel grillage, scaffold, demolition and new glazing installation. Alternate access routes will be in place.	Ongoing
Mary Glowrey Building (MGB) Fish Stair	MGB fish stair extension works are in progress preparing for the connection into the new STKB structure.	Ongoing
Mary Glowrey Building (MGB)	Heritage conservation works to the MGB façade will impact traffic arrangements.	Ongoing
Mary Glowrey Building (MGB) Overbuild	MGB overbuild works continue including services rough-in.	Ongoing
Main Construction Site	The erection of STKB structural steel continues with steel currently being installed to levels 4-5 and steel trusses up to level 7.	Ongoing
Main Construction Site	The fit-out in the STKB basement continues including services rough-in and blockwork.	Ongoing
Main Construction Site	Pedestrians should be aware of increased construction vehicle movement. Please expect changes to traffic and pedestrian routes with the assistance of traffic controllers.	Ongoing



Please observe direction and safety signs and follow the instructions of Watpac traffic controllers.

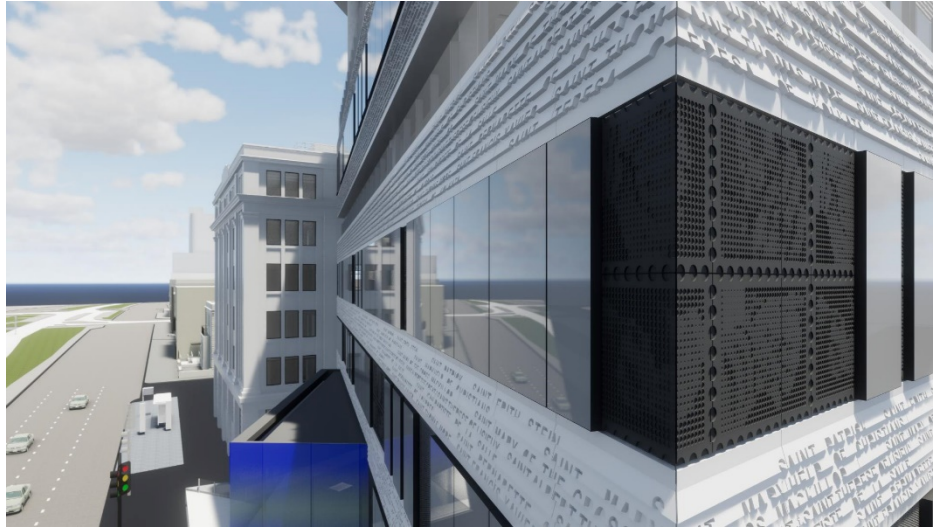
If you wish to provide feedback, contact the team at ACUfeedback@watpac.com.au

Facade visual mock-up

The first of two major inspections of the facade panels, the visual mock-up (VMU) included a true mock-up built so the design team could review the completed facade panels. These include: the glass colour, frames, frame finishes, glass reinforced concrete facade panels, joint and connection details, trims, and both external and internal seals.

This was the first time to inspect all individual components put together and positive to see the design integrity from the architect's render (pictured) has been accurately achieved.

The VMU has now been approved to proceed to the performance mock-up (PMU) to test the facade's integrity and performance.



Please observe direction and safety signs and follow the instructions of Watpac traffic controllers.

If you wish to provide feedback, contact the team at ACUfeedback@watpac.com.au

The latest in pictures



Please observe direction and safety signs and follow the instructions of Watpac traffic controllers.

If you wish to provide feedback, contact the team at ACUfeedback@watpac.com.au