



Upcoming and ongoing activity: How you may be affected

Please expect intermittent noise during this period

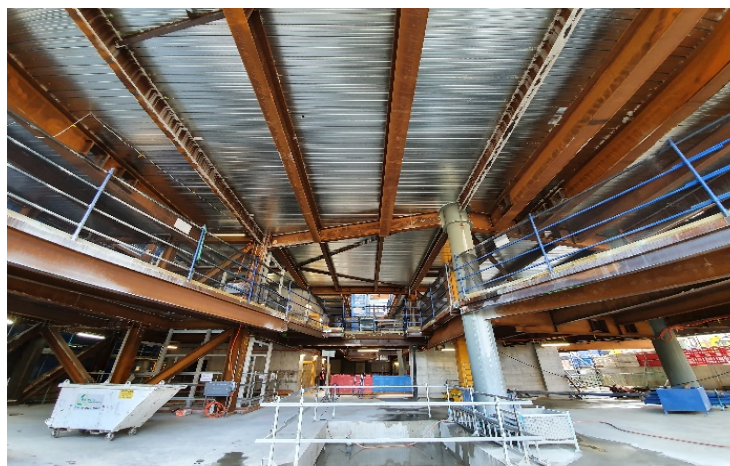
| Area | Impact | Timing |
|--|---|---------|
| CitiPower network | CitiPower network works continue in the area so expect disruptions and changes to traffic arrangements. You can visit this web page for more information. CitiPower works are independent to the project. | August |
| Mary Glowrey Building (MGB) services upgrade | MGB services upgrade works continue. Further detail will be provided through university works notifications. | Ongoing |
| Mary Glowrey Building (MGB) Atrium | MGB Atrium upgrade works continue to facilitate new services works involving new hoarding, structural steel grillage, scaffold, demolition and new glazing installation. Alternate access routes will be in place. | Ongoing |
| Mary Glowrey Building (MGB) Fish Stair | MGB Fish Stair extension works are in progress preparing for the connection into the new STKB structure. | Ongoing |
| Mary Glowrey Building (MGB) | Heritage conservation works to the MGB façade will impact traffic arrangements. | Ongoing |
| Mary Glowrey Building (MGB) Overbuild | MGB Overbuild works continue including services rough-in. | Ongoing |
| Main Construction Site | The erection of STKB structural steel continues with steel currently being installed to levels 3-4. | Ongoing |
| Main Construction Site | The fit-out has commenced in the STKB basement, including services rough-in, blockwork and construction of the substation on level B1. | Ongoing |
| Main Construction Site | Pedestrians should be aware of increased construction vehicle movement. Please expect changes to traffic and pedestrian routes with the assistance of traffic controllers. | Ongoing |

Saint Teresa of Kolkata Building update

31 August 2021

See the latest construction progress on [webcam 1](#) and [webcam 2](#)

The latest in pictures



Please observe direction and safety signs and follow the instructions of Watpac traffic controllers.

If you wish to provide feedback, contact the team at ACUfeedback@watpac.com.au